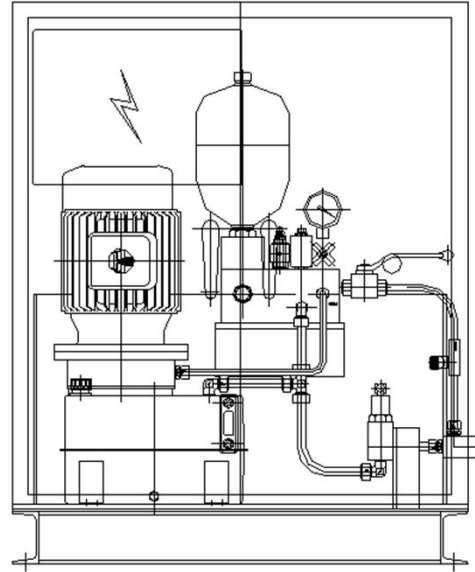
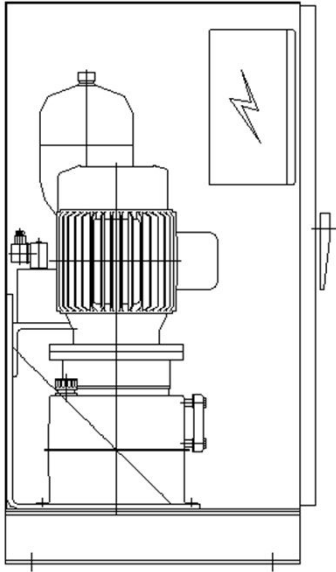
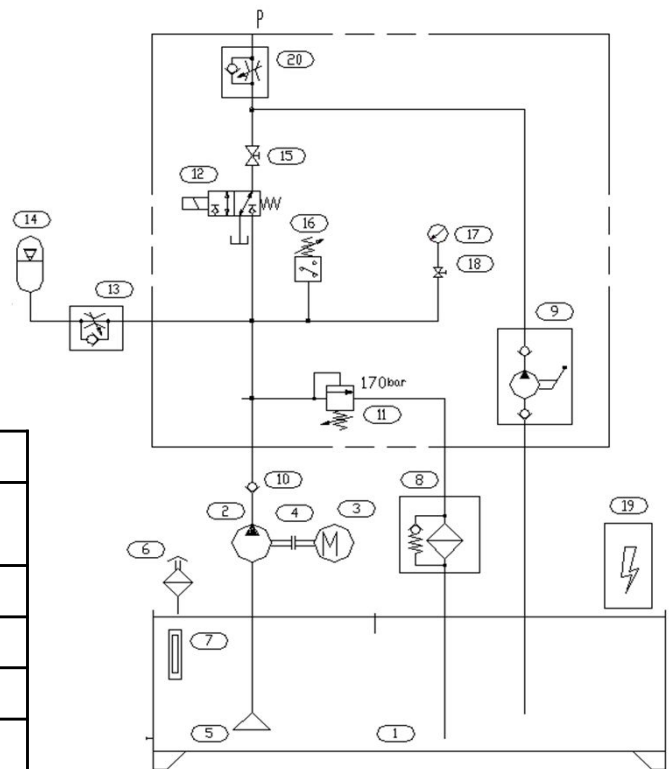


**CSHPU**

- Design and produce by customer order.



◆ Hydraulic Circuit



◆ Specification

MOTOR		1.5 x 4P x 440V/220V
Pump		Pressure 200Kgf/cm <sup>2</sup> Flow Late 1.5ℓ
Solenoid Valve	V	AC100 / 220
Weight	Kg	250
Accumulator		4000cc – 200Kgf/cm <sup>2</sup>
Manual Pump		5cc / Stroke - 200Kgf/cm <sup>2</sup>